

Local Survey Control Network

Santa Barbara City College - Wake Campus

N: 1989471.55
E: 6022148.09
Z: 122.38
MAG SPIKE



Date of Aerial Flight:
NOVEMBER 30, 2015

Date of Plan:
MARCH 17, 2016

Site Address:
300 N TURNPIKE RD, SANTA BARBARA, CA 93111

Assessor's Parcel Number:
A.P.N.: 067-230-010

Bench Mark:
THE ELEVATIONS SHOWN HEREON ARE BASED ON THE NAVD 88 DATUM (GEOID 128) AS COMPUTED FROM - GPS STATIC OBSERVATIONS WAS USED AS THE DATUM FOR THIS SURVEY.

Horizontal Datum Reference:
THE BEARINGS SHOWN HEREON ARE BASED ON THE CALIFORNIA STATE PLANE COORDINATE SYSTEM - NAD 83 (2011), ZONE V AS COMPUTED FROM GPS STATIC OBSERVATIONS USING STANDARD SURVEY PROCEDURES WHICH WERE ADJUSTED USING NGS-OPUS UTILITY. DATE OF STATIC OBSERVATIONS: DECEMBER 10, 2015

Boundary and Easements:
ESTABLISHED PER PRELIMINARY TITLE REPORT (PTR) PREPARED BY FIRST AMERICAN TITLE COMPANY, DATED JANUARY 27, 2016, ORDER NO. 4206-5059012, ADJUSTED TO FOUND CITY CENTERLINE MONUMENTS, USING STANDARD SURVEYING PROCEDURES.

Legal Description:
REAL PROPERTY IN THE UNINCORPORATED AREA OF THE COUNTY OF SANTA BARBARA, STATE OF CALIFORNIA, DESCRIBED AS FOLLOWS:
THAT PORTION OF LOT 1 IN TRACT "C" OF THE RANCHO LA COLETA, IN THE COUNTY OF SANTA BARBARA, STATE OF CALIFORNIA, ACCORDING TO THE PARTITION SURVEY AND MAP OF SAID RANCHO MADE BY EDWARD FOR. ON FILE IN THE OFFICE OF THE COUNTY CLERK OF SAID COUNTY AND STATE IN THE MATTER OF THE ESTATE OF DANIEL A. HILL, DECEASED (CASE NO. 8988), DESCRIBED AS FOLLOWS:
BEGINNING AT POST NO. 4 OF SAID PARTITION MAP AND SURVEY, THENCE 1ST, SOUTH 02°38' WEST ALONG THE EAST LINE OF SAID RANCHO 482.69 FEET TO A 3/4 INCH SURVEY PIPE, FROM WHICH A 3/4 INCH SURVEY PIPE OF SAID EAST LINE BEARS NORTH 02°38' EAST 19.80 FEET; THENCE 2ND, NORTH 88°51'30" WEST PARALLEL WITH THE NORTH LINE OF SAID LOT 1 IN TRACT "C" 913.35 FEET TO THE CENTER LINE OF TURNPIKE ROAD FROM WHICH A 3/4 INCH SURVEY PIPE SET ON THE EAST LINE OF SAID BEARS SOUTH 88°51'30" EAST 30.00 FEET; THENCE 3RD, ALONG THE CENTER LINE OF TURNPIKE ROAD, NORTH 02°38' EAST 482.62 FEET TO THE NORTHWESTERLY CORNER OF THE TRACT OF LAND DESCRIBED IN THE DEED TO KATHERINE ROWE, DATED AND RECORDED MARCH 5TH, 1917 IN BOOK 155 AT PAGE 527 OF DEEDS, FROM WHICH A 3/4 INCH SURVEY PIPE BEARS SOUTH 88°51'30" EAST 969.85 FEET TO THE POINT OF BEGINNING.

6
N: 1988791.28
E: 6022242.14
Z: 113.91
MAG SPIKE

77
N: 1988922.89
E: 6022364.92
Z: 117.47
MAG SPIKE

79
N: 1989289.07
E: 6022349.91
Z: 118.96
MAG SPIKE

84
N: 1989191.39
E: 6022885.33
Z: 96.14
MAG SPIKE & WASHER

85
N: 1989227.38
E: 6023134.44
Z: 93.27
MAG SPIKE & WASHER

71
N: 1989132.89
E: 6022748.16
Z: 116.85
MAG SPIKE/AERIAL PANEL

75
N: 1988984.03
E: 6022749.52
Z: 116.91
MAG SPIKE

74
N: 1988897.22
E: 6023031.48
Z: 112.16
MAG SPIKE

1988800 N

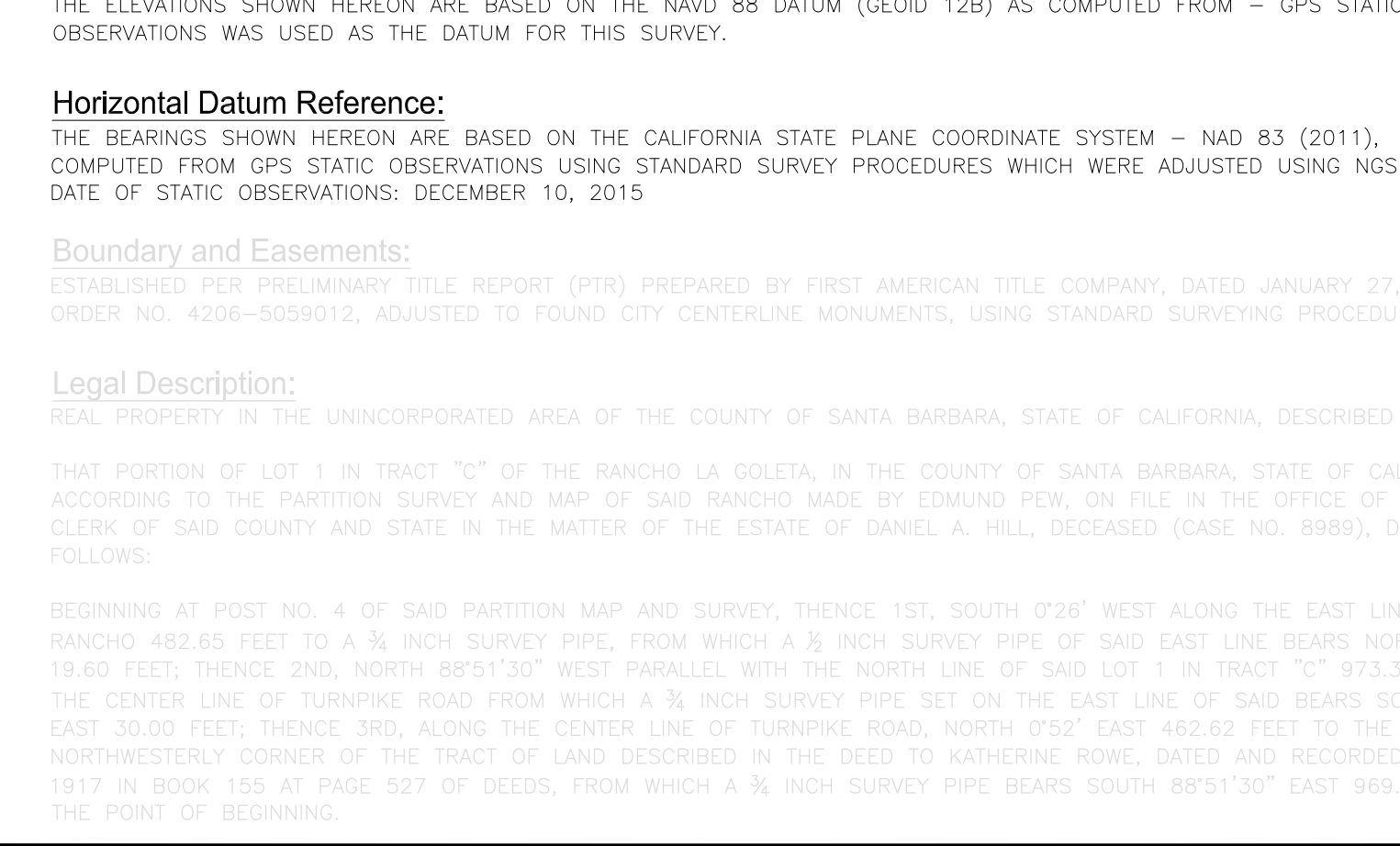
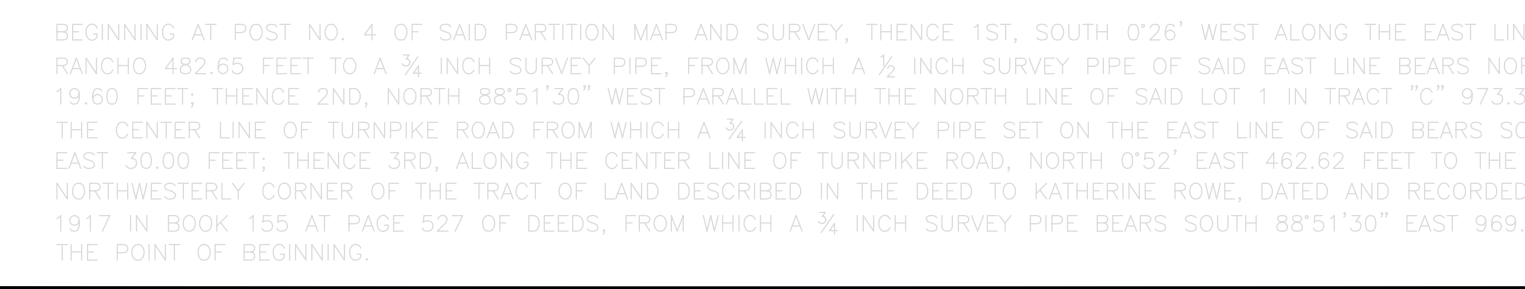
6022400 E

1988800 N

6022900 E

Survey Prepared For:
Santa Barbara City College
721 Cliff Drive
Santa Barbara, CA 93109

Survey Prepared By:
Hahn and Associates, Inc.
26074 Avenue Hall, Suite 2
Santa Clarita, CA 91355
(661) 775-9500



Aerial Legend

ASPH = Asphalt Surface	Horizontal and Vertical Survey Control Point	Handicap Parking	Limits of Structure Foot
BFS = Back Flow Device	Flag Pole	Manhole	RW = Right of Way
CB = Box	Light Pole	Power Pole	Property Line
CBX = Catch Basin	Light Pole	Power Pole Anchor	Center Line
CCB = Communications Box	Light Pole	Street Light	Chimney Flue
CMP = Corrugated Metal Pipe	Light Pole	Street Light	Retaining Wall
CO = Clean Out	Light Pole	Street Light	Block Wall
CONC = Concrete	Light Pole	Street Light	
CS = Grouting Grate	Light Pole	Street Light	
EDS = Electric Box	Light Pole	Street Light	
GS = Gas Box	Light Pole	Street Light	
GP = Gas Post	Light Pole	Street Light	
GV = Gas Valve	Light Pole	Street Light	
ICV = Irrigation Control Valve	Light Pole	Street Light	
LBX = Light Box	Light Pole	Street Light	
PP = Power Pole	Light Pole	Street Light	
CBX = Sewer Box	Light Pole	Street Light	
CO = Sewer Out	Light Pole	Street Light	
SMH = Sewer Manhole	Light Pole	Street Light	
SBX = Utility Box	Light Pole	Street Light	
UVL = Utility Vault	Light Pole	Street Light	
WBX = Water Box	Light Pole	Street Light	
WW = Water Meter	Light Pole	Street Light	
WV = Water Valve	Light Pole	Street Light	

THIS MAP IS AN AERIAL PHOTOGRAPHY SURVEY DERIVED FROM AERIAL PHOTOGRAPHY METHODS AND COMPLIES WITH THE ACCURACY REQUIREMENTS OF THE FEDERAL AERIAL PHOTOGRAPHY SURVEYING ACT AND THE AMERICAN CONGRESS ON SURVEYING AND MAPPING PRINTED OFFICE REVISIONS OF THE FEDERAL AERIAL PHOTOGRAPHY SURVEYING ACT. HEAVY BRUSH, HEAVY SHADOWS, OR BLIND AREAS IN THE BACK OF SOME STRUCTURES.